



Includes  
\$59,000  
Additional  
Upgrades

**Lot 135 Gurner Av AUSTRAL**

**Land size: 333.5 sqm**

**Building size: 166 sqm**



3 Bed

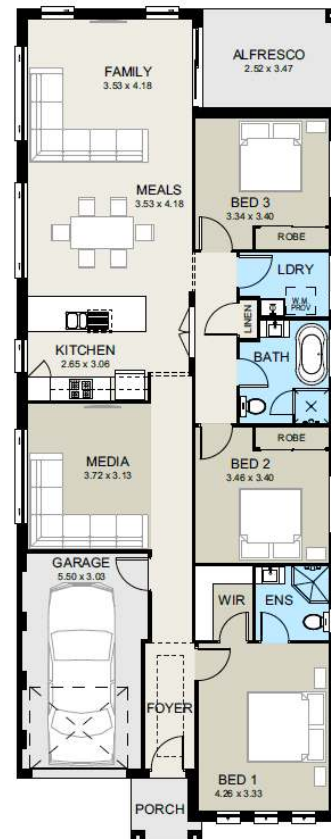


2 Bath



Single

- Blaxland 18 design
- Silver Inclusions with Finishing Touches
- Stradbroke Facade included
- Tiles to kitchen, meals, family, porch & alfresco
- Carpet to bedrooms & media
- Driveway
- Ducted air-conditioning
- 20mm kitchen stone bench top
- Omega oven and rangehood
- Omega stainless steel dishwasher
- Semi frameless shower screen to bathroom
- Wall hung vanities
- 3 in 1 Exhaust fan/heater/light to bathroom
- Feature entrance door
- Alto cornice to main living areas
- 3 Coat Dulux wash & wear paint system
- T2 termite resistant structural framing
- Tiled roof fully sarked
- All BASIX requirements
- H1 slab & salinity if required
- Turf to front, clothesline, letterbox & TV antenna



All images for illustrative purposes only and may not be a true representation.

Room sizes shown are approximate only, please refer to final working drawings for actual sizes. Plans are protected by copyright. Prices, inclusions and plans are subject to variation without notice. Display/show home designs and inclusions vary throughout Australia and are provided as a guide only. Please refer to your building contract & drawings for the specific design facade and inclusion details of your new home. Price subject to change without notice. Conditions apply. Contact us for all information regarding the inclusions. Subject to site survey & land classification, council, Sydney water, bushfire and other regulatory requirements/approvals. V1 - Price valid until 28 May 2022