

Home  
Only



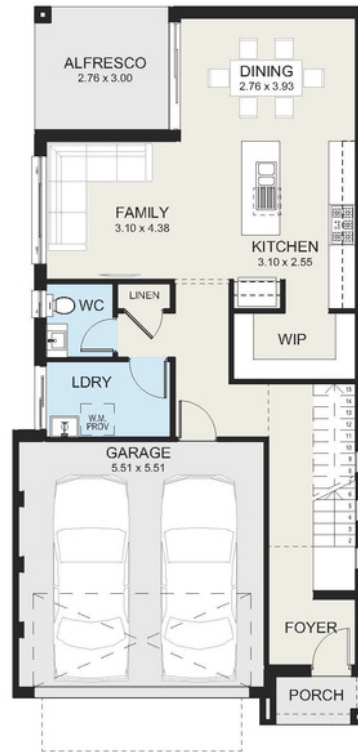
## Flinders 23 Design

Minimum Lot Size: 10m Width | 25m Depth  
Building Size: 217.42m<sup>2</sup>



## Inclusions

- Stradbroke façade
- Standard site costs & Basix
- Daikin ducted air-conditioning
- Tiles to kitchen, family, dining & outdoor areas
- Carpet to bedrooms
- Colour concrete driveway & plain crossover
- Front turf, letterbox & clothesline
- 20mm kitchen stone benchtop
- Polytec kitchen cabinets
- Soft-close drawers & cabinets
- 900mm oven, cooktop & rangehood
- Stainless steel dishwasher
- Freestanding bath
- Wall-hung vanities
- 1200mm high tiles to bathroom & ensuite
- T2 termite-treated frame



📞 Jackson 0404 119 500

✉️ [sales@bluetonguehomes.com.au](mailto:sales@bluetonguehomes.com.au)