

Home  
Only



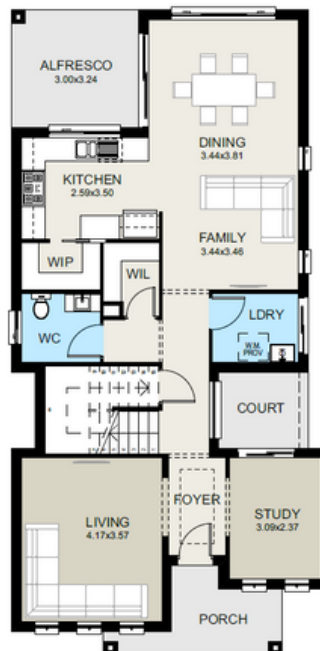
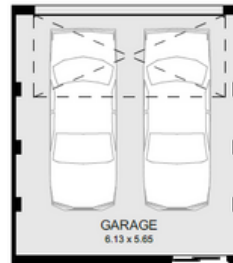
## Sturt 28 Design

Minimum Lot Size: 11m Width | 31m Depth  
Home Size: 258.28m<sup>2</sup>



## Inclusions

- Stradbroke façade
- Standard site costs & Basix
- Daikin ducted air-conditioning
- Tiles to kitchen, dining, family & outdoor areas
- Carpet to bedrooms, living & study
- Colour concrete driveway & plain crossover
- Front turf, letterbox & clothesline
- 20mm kitchen stone benchtop
- Polytec kitchen cabinets
- Soft-close drawers & cabinets
- Stainless steel dishwasher
- Freestanding bath
- Wall-hung vanities
- 1200mm high tiles to bathroom & ensuite
- T2 termite-treated frame
- Roller blinds to all clear-glazed windows
- Flyscreens to all opening windows
- Downlight allowance (20)



### Sales Contact

📞 Jackson 0404 119 500

✉️ [sales@bluetonguehomes.com.au](mailto:sales@bluetonguehomes.com.au)